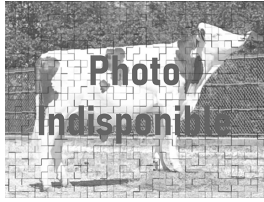


OPICAL JB



MACINTOSH

EPONA

ISU144

National number : 0119024760
SHGC : F / MTCP : F

KAPPA Caséine : BB
BETA Caséine : A2A2

MS 112

TEMP 113

CE 88 %

CA 87 %

FUNCTIONALS

Udder Health : 0,6 Somatic Cells : 0,6 MACL : 0,3
Reproduction : 0,4 cow fert. : 0,2 heifer fert. : 0,5 Interval calving / 1st AI : 0,3
Prod life : 1,3

Milk 698

Prot Cont % -0,2

Fat Cont % 0

Prot 22

Fat 32

PRODUCTION Rel

Type synthesis 113

TYPE

| | | | 88 | 100 | 112 | 124 |
|------------------------|------------|----------|----|-----|-----|-----------|
| BODY CAPACITY | 100 | | | | | |
| Height sacrum | 100 | | | | | |
| Chest width | 96 | | | | | |
| Chest depth | 103 | | | | | |
| Body depth | 102 | | | | | |
| RUMP | 94 | | | | | |
| Rump length | 83 | | | | | |
| Hip width | 95 | | | | | |
| Width at thurls | 108 | | | | | |
| Rump angle | 115 | Sloped | | | | High pins |
| FEET & LEGS | 115 | | | | | |
| Legs rear view | 116 | Hock-out | | | | Hock-in |
| Hock thickness | 95 | Thin | | | | Thick |
| Rear leg set | 100 | Straight | | | | Sloped |
| Foot angle | 113 | Sloped | | | | Straight |
| UDDER | 118 | | | | | |
| Fore udder atta | 106 | | | | | |
| Rear udder height | 114 | | | | | |
| Rear udder width | 108 | | | | | |
| Udder depth | 106 | | | | | |
| Udder balance | 119 | | | | | |
| Udder cleft | 119 | | | | | |
| teat place. Front | 119 | | | | | |
| teat direction | 112 | | | | | |
| TEATS | 106 | | | | | |
| Teat length | 112 | Long | | | | short |
| Teat form | 90 | Thin | | | | Big |
| MUSCULARITY | 95 | | | | | |