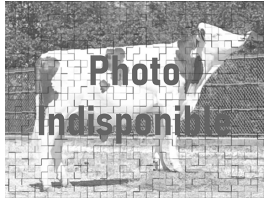


# OBREZAC JB



MACINTOSH

ESPRIT JB

ISU160

National number : 1539048863  
SHGC : F / MTCP : F

KAPPA Caséine : AB  
BETA Caséine : A2A2

MS 106

TEMP 93

CE 89 %

CA 89 %

FUNCTIONALS

Udder Health : 0 Somatic Cells : 0,3 MACL : -0,3

Reproduction : 0,8 cow fert. : 0,8 heifer fert. : 0,6 Interval calving / 1st AI : -0,1

Prod life : 0,6

Milk 498

Prot Cont % 1,6

Fat Cont % 2,3

Prot 31

Fat 48

PRODUCTION Rel

Type synthesis 120

TYPE

			88	100	112	124
<b>BODY CAPACITY</b>	<b>99</b>					
Height sacrum	94					
Chest width	100					
Chest depth	99					
Body depth	101					
<b>RUMP</b>	<b>104</b>					
Rump length	101					
Hip width	106					
Width at thurls	99					
Rump angle	85	Sloped				High pins
<b>FEET &amp; LEGS</b>	<b>108</b>					
Legs rear view	109	Hock-out				Hock-in
Hock thickness	120	Thin				Thick
Rear leg set	90	Straight				Sloped
Foot angle	106	Sloped				Straight
<b>UDDER</b>	<b>131</b>					
Fore udder atta	112					
Rear udder height	109					
Rear udder width	104					
Udder depth	116					
Udder balance	153					
Udder cleft	118					
teat place. Front	128					
teat direction	124					
<b>TEATS</b>	<b>108</b>					
Teat length	120	Long				short
Teat form	109	Thin				Big
<b>MUSCULARITY</b>	<b>91</b>					